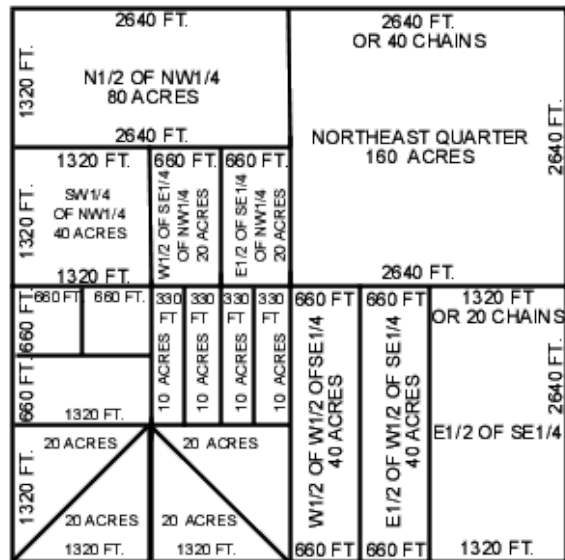


Community	Inhabited Structure	Non-Participating Property	Road	Railroad	Public Utility	Total Height	Shadow Flicker	Sound
A	3.0x Tip Height	1.25x Tip Height	1.25x Tip Height	1.0x Tip Height	1.0x Tip Height	500'	Not more than 30 hours/year	50 dBA at Participating structure 45 dBA at non-participating property line
B	2.8x Tip Height or 1,400'	1.5x Tip Height	1.5x Tip Height	-	-	499'	No Flicker on any Home	45 dBA at non-participating property lines
C	3.0x Tip Height	1.5x Tip Height	1.2x Tip Height	-	-	-	Not more than 30 hours/year	45 dBA at non-participating dwelling
D	2.0x Tip Height or 1,000'	1.0x Tip Height	1.0x Tip Height	-	-	-	-	50 dBA at inhabited structure
E	2.0x Tip Height or 1,000'	1.0x Tip Height	1.5x Tip Height	1.5x Tip Height	30'	-	Not more than 30 hours/year	55 dBA at inhabited structure
F	3.0x Tip Height or 1,500'	1,500'	1.5x Tip Height or 750'	-	1.5x Tip Height or 750'	499'	Not more than 30 hours/year	50 dBA at Participating structure 45 dBA at non-participating property line
G	2.0x Tip Height or 1,000'	1.5x Hub Height	1.5x Hub Height	1.5x Hub Height or 400'	-	-	Not more than 30 hours/year	55 dBA at inhabited structure
H	1,400'	1,400'	1.5x Tip Height	-	1.25x Tip Height	499'	Not more than 20 hours/year	50 dBA at Participating structure 45 dBA at non-participating property line
I	2.0x Tip Height or 1,000'	1.5x Hub Height	1.5x Hub Height or 400'	1.5x Hub Height or 400'	-	-	Not more than 30 hours/year	55 dBA at inhabited structure
J	1.5x Tip Height or 1,000'	1.5x Hub Height	1.5x Hub Height or 400'	-	-	-	Not more than 30 hours/year	55 dBA at inhabited structure
K	2.0x Tip Height or 1,000'	1.0x Tip Height	1.5x Hub Height or 400'	1.5x Hub Height or 400'	30'	-	Not more than 30 hours/year	45 dBA at non-participating property lines
L	1,400'	2,000'	1.5x Tip Height	-	1.5x Tip Height	499'	Participating: Not more than 30 hours/year Non-participating: No shadow flicker	50 dBA at Participating structure 45 dBA at non-participating property line
M	1,320'	1.2x Tip Height	1.2x Tip Height	-	-	-	Not more than 30 hours/year	55 dBA at inhabited structure
N	3.0x Tip Height or 1,400'	1.25x Tip Height	1.25x Tip Height	1.0x Tip Height	1.0x Tip Height	-	-	55 dBA at non-participating property lines
O	2.0x Hub Height or 1,000'	1.5x Hub Height	1.5x Hub Height or 400'	1.5x Hub Height or 400'	-	-	Not more than 30 hours/year	55 dBA at inhabited structure
P	Participating Structure: 1,320' Non-participating Structure: 1,640'	1.5x Tip Height	1.5x Hub Height or 500'	-	1.5x Hub Height or 500'	499'	Not more than 30 hours/year	50 dBA at Participating structure 45 dBA at non-participating property line
Q	1,000'	1.1x Tip Height	1.1x Tip Height or 200'	-	1.1x Tip Height or 200'	-	Not more than 30 hours/year	50 dBA at inhabited structure



1.5 x Tip Height (499') = 748.5'  
 2.0 x Tip Height (499') = 998'  
 3.0 x Tip Height (499') = 1,497'